

CM1400

Chime and Siren Tone Generator

CHIME UNIT

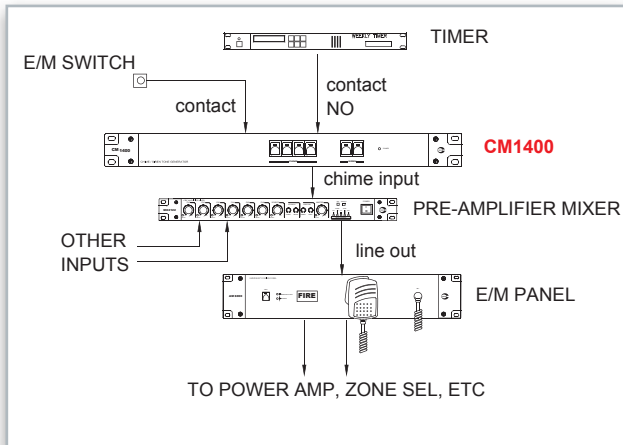


CM1400 offers 5 chimes and 2 siren tones with selectable balanced and unbalanced line output. Activation of chime shall be from front switches or via remote triggering terminal, enabling the unit to be linked to external sensors or triggering system such as alarm panel, remote mic or emergency switch. Siren has priority over chimes.

It is suitable for installation in schools, factories, hazardous areas etc.



APPLICATION SCHEMATIC



rear view



FEATURES

- 5 types of chimes and 2 siren
- Adjustable output volume
- Selectable output as balanced or unbalanced line
- Front panel switch activation or via remote trigger port

TECHNICAL SPECIFICATIONS

Operating voltage	24V DC ; 0.5 A
Power consumption	0.3 A
Chime type	4 tone up, 4 tone down, 2 tone
	Ringing bell, Westminster
Siren type	Constant siren 8 KHz
	Wavy siren
External activation	Dry contact
Output	Line 1 V
Output impedance	10 K unbalanced
Gain	+4 dB max
Dimensions (WxHxD)	482 x 44 x 90 mm
Weight (kg)	1.6 kg

MICROPHONES

TC122

Condenser Tie Clip Mic



10m cable length with 3.5mm lockable stereo jack

GM8

Condenser Gooseneck Mic



XLR Male base

GM9

Condenser Gooseneck Mic



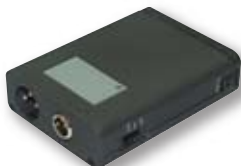
CB110

Handheld Mic



PP915

Phantom Power Adaptor for TC122



	TC122	GM8	GM9	CB110
Capsule		Back electret condenser		Dynamic
Polar pattern		Uni directional		Omni
Frequency response		50 ~ 16 KHz		300 - 8 KHz
Sensitivity		-45 dB +/- 3 dB		-72 dB
Output impedance	600 Ohm	1 K Ohm		600 Ohm
Power supply	9 ~ 12V DC Phantom power supply			-
Dimension (mm)	7.8 dia x 25	400	495	55 x 85
Weight (gm)	40	60	90	110